

Progress on the S&T Redesign

- SC requested TRC to check-in periodically on redesign
- Goals of redesign: Optimizing S&T monitoring to address RMP management questions in most cost-effective manner
- Are there course corrections needed for 2010?



Changes to S&T - Sediment

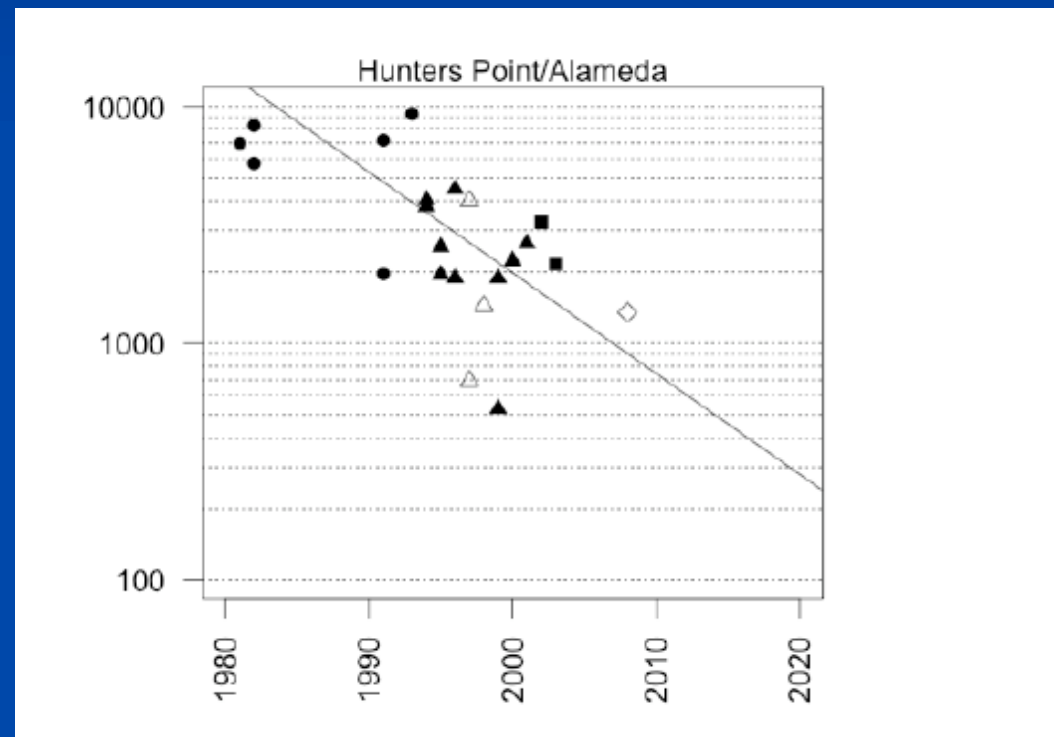
- Alternating seasons
 - Commencing in 2010 with wet weather
 - Fewer sites in winter (27 wet vs 47 dry)
- Incorporation of benthos
 - 27 sites complete the SQO triad
 - Developing benthic assessment and SQO methodologies as part of 2010 PS



Changes to S&T Sport Fish & Bivalves

- Best trend indicators
- Sport Fish
 - Maintain status quo
 - Five sites triennial
 - Next time 2012
- Bivalves
 - Modified status quo
 - Maintain 11 sites conduct biennial
 - Analyzing 2010
 - NOAA CEC PS

- State Mussel Watch, Aroclors
- National Mussel Watch, congeners
- ▲ RMP GERG, congeners
- △ RMP CCCSD, congeners
- RMP DFG, congeners
- ◇ RMP AXYS, congeners





Changes to S&T Bird Eggs

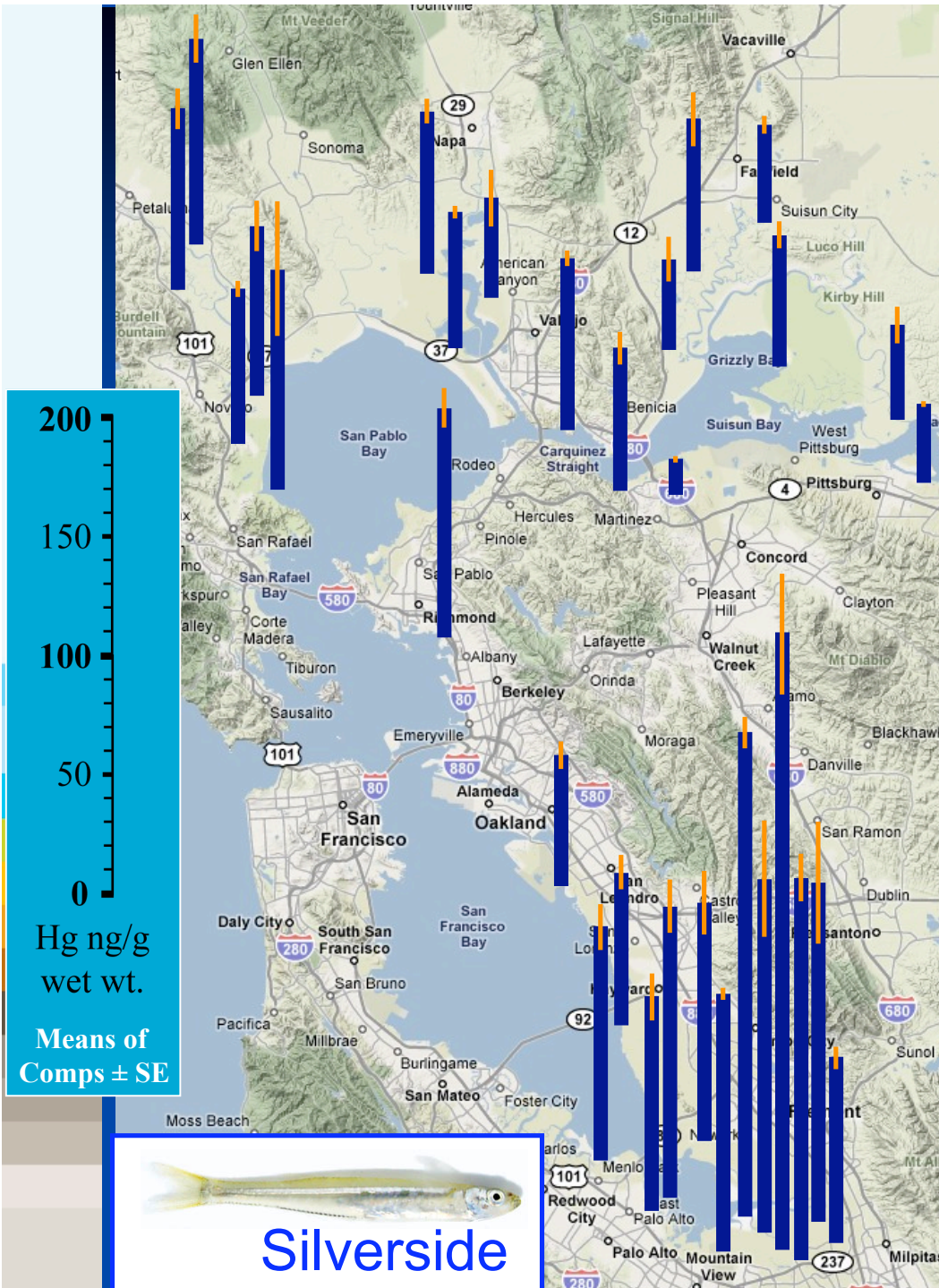


- Incorporated pilot study into S&T
 - Triennial element - 2009 successful
 - Good trend indicators
- Cormorants
 - 3 sites, 3 comp/7 eggs
 - PCBs, BDEs, Hg, Se, Pest, PFCs
- Terns
 - 6 sites, 3 comp/7 eggs
 - Hg, Se, BDEs



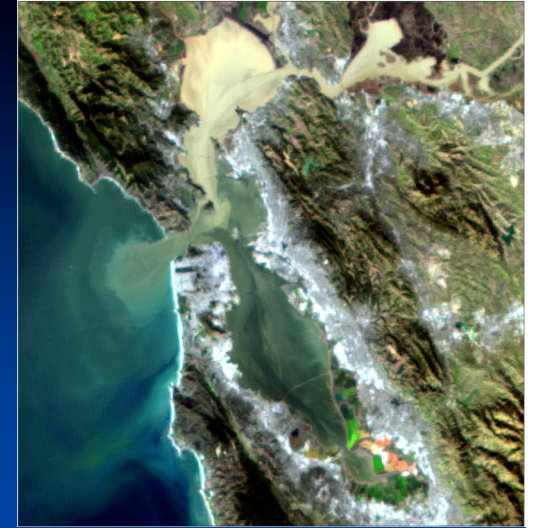
Changes to S&T Small Fish

- Incorporated pilot study into S&T
 - Annual element
 - 2010 last year of 3-yr intensive effort
 - Evaluate in 2010 for future plans



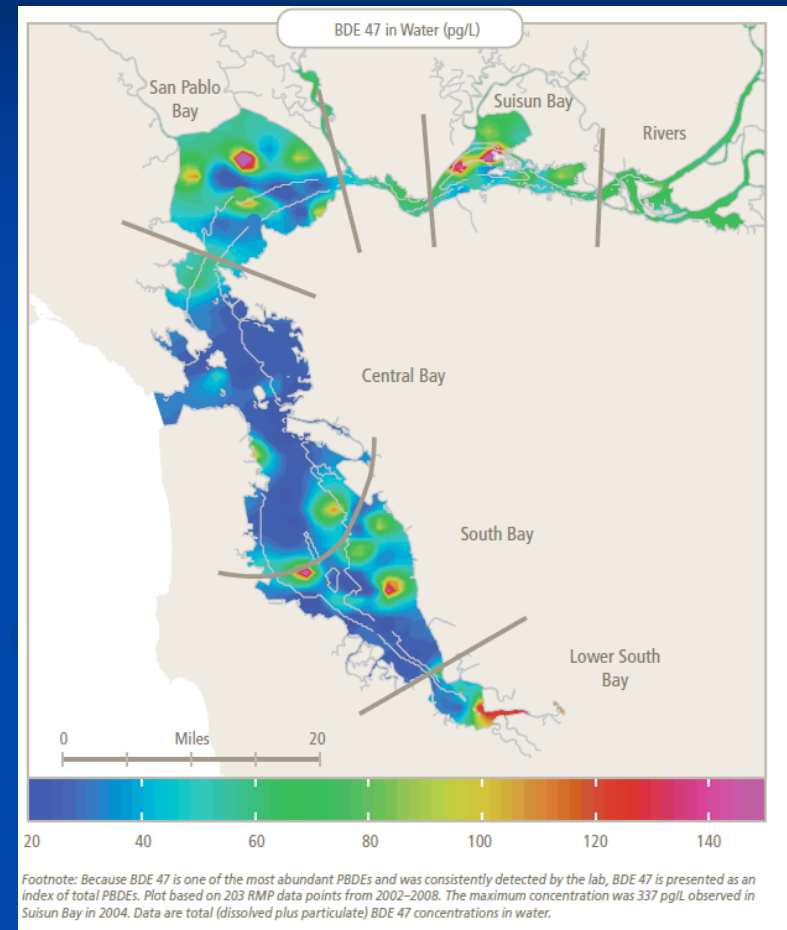
Changes to S&T Loadings

- Mallard Island
 - Triennial
- Guadalupe
 - Triennial
- Small Tributaries
 - Annual
- 2010 - All three tributaries will be sampled



Changes to S&T - Water

- Reduction in sampling stations (31 to 22)
 - Can't calculate annual means for some segments
 - Not big problem - can use rolling averages
- Reduction in frequency of organic analyses
 - PCB, Pesticides, PAHs alternating years
 - PBDEs annually - Have data from 2002 - should discuss at what point to scale this back

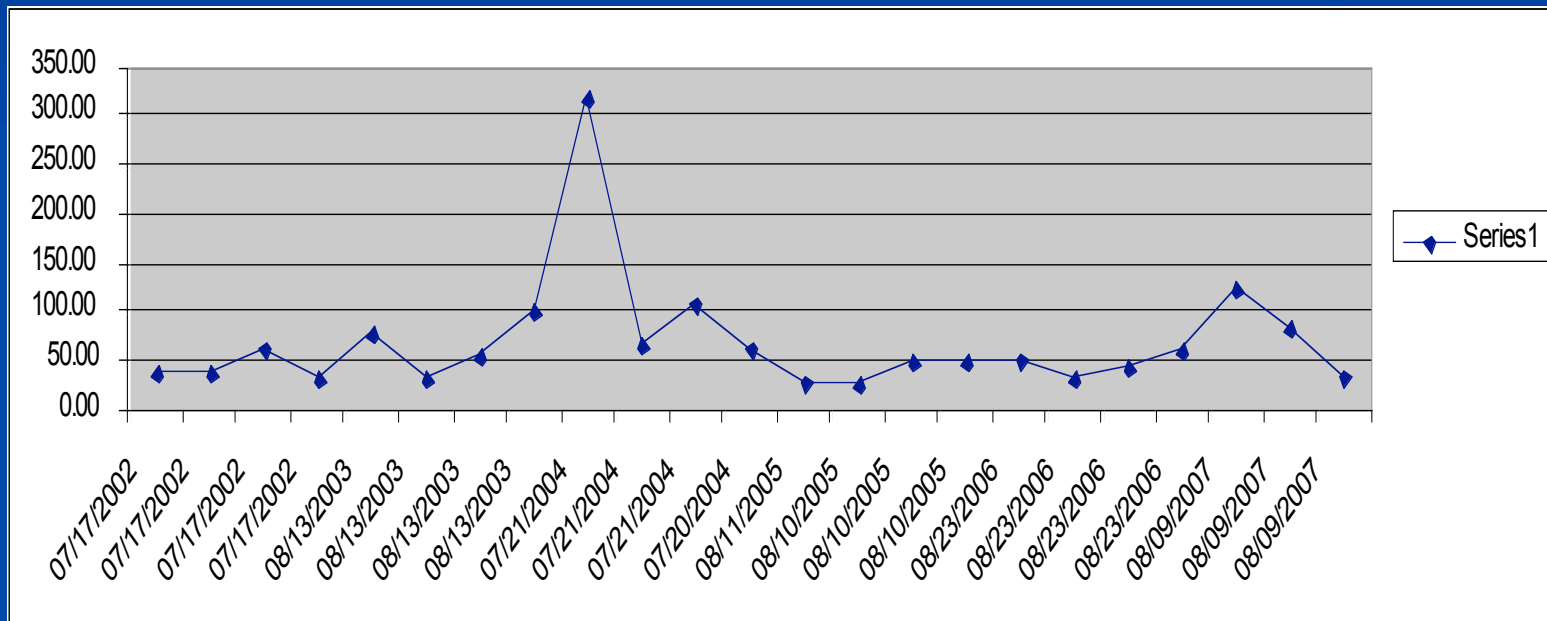


Course Corrections for S&T?

- Develop an S&T Strategy?
 - Outlining management questions, statistical design, periodic re-evaluation, peer-review plans, etc.
- Review contaminants?
 - Frequency of existing contaminants (PBDEs)
 - Addition of new contaminants (e.g., PFCs)
 - 2010 PS w/AXYS Analytical
- Addition of new indicators/ methods?
 - EDCs in fish
 - 2010 Molecular TIEs



Total PBDE - San Pablo Bay



Trends at Historic Sites

