

2023 RMP Annual Meeting

A scenic view of the Golden Gate Bridge in San Francisco, California. The bridge's iconic red-orange towers and suspension cables are visible against a clear blue sky. In the foreground, a long wooden pier extends into the water, with several birds perched on its structure. The water is a deep blue, and the overall atmosphere is bright and clear.

David Brower Center
Berkeley, CA
October 12, 2023

We acknowledge the San Francisco Bay is the ancestral homeland of many indigenous people, including the Ohlone, Patwin, Coast Miwok, and Bay Miwok.

(acknowledgement developed by the native people of the SF Bay)



Virtual Audience Zoom tips

1. Update your name and add your affiliation.
2. Use the chat function if you have a comment, question, or technical issue.
3. The Zoom moderator will repeat/voice questions from our virtual audience for the speaker or the panel.

In person attendees

1. Please note that our virtual audience won't be able to hear anything that is not spoken directly into a microphone. A runner will bring a microphone so that our virtual audience can hear the question or comment.



RMP 2023 Highlights

Amy Kleckner
San Francisco Estuary Institute

RMP Annual Meeting, October 2023



New Faces at the RMP



Amy Kleckner



Pedro Avellaneda



Jennifer Dougherty



Kayli Paterson



New Advisors on the TRC

Thank You

- Yuyun Shang (EBMUD)
- Mary Lou Esparza (Central Contra Costa Sanitary)
 - Tessa Beach (USACE)

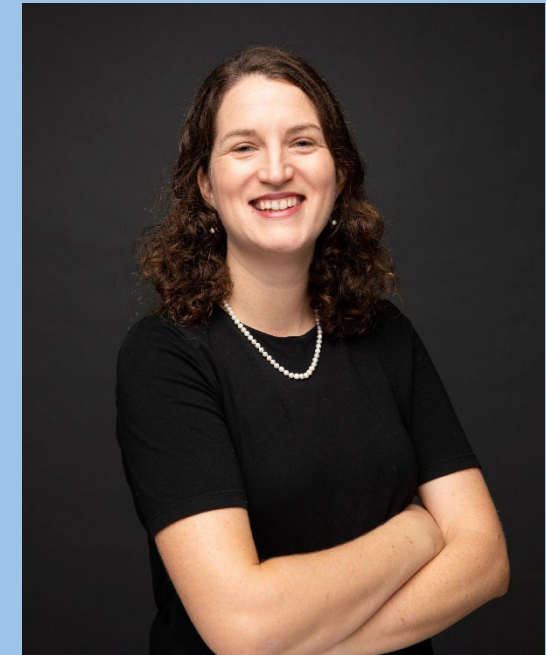
Welcome

- Jaime Rose Sibley Yin (USACE)
 - Alicia Chakrabarti (EBMUD)
- Samantha Engelage (Palo Alto)



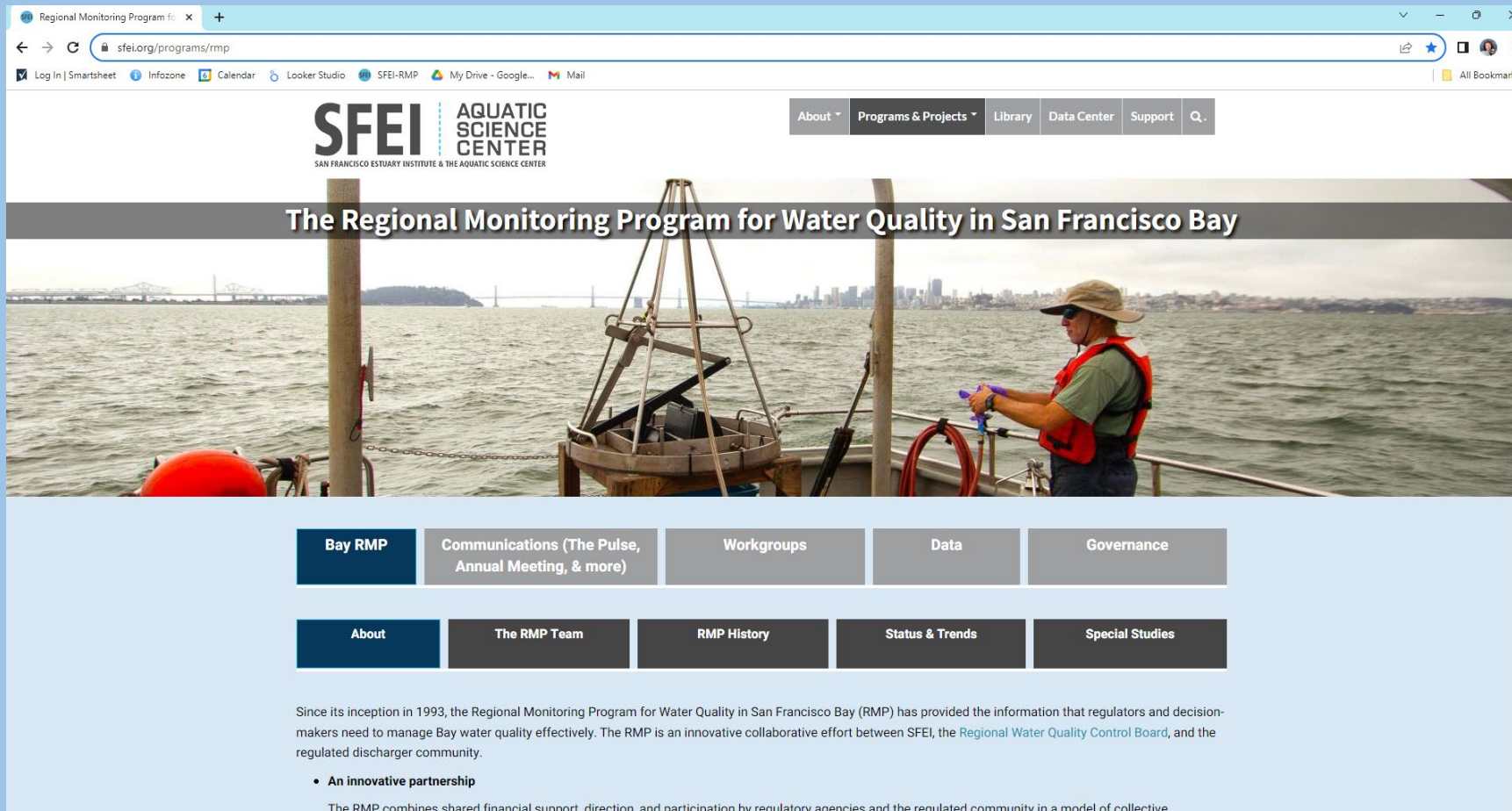
RMP Work Groups

- New expert advisor to the MPWG
 - Dr. Barbara Beckingham (College of Charleston)
- 15 Special Studies projects approved



New and Improved RMP Webpage went Live in June.

<https://www.sfei.org/programs/rmp>

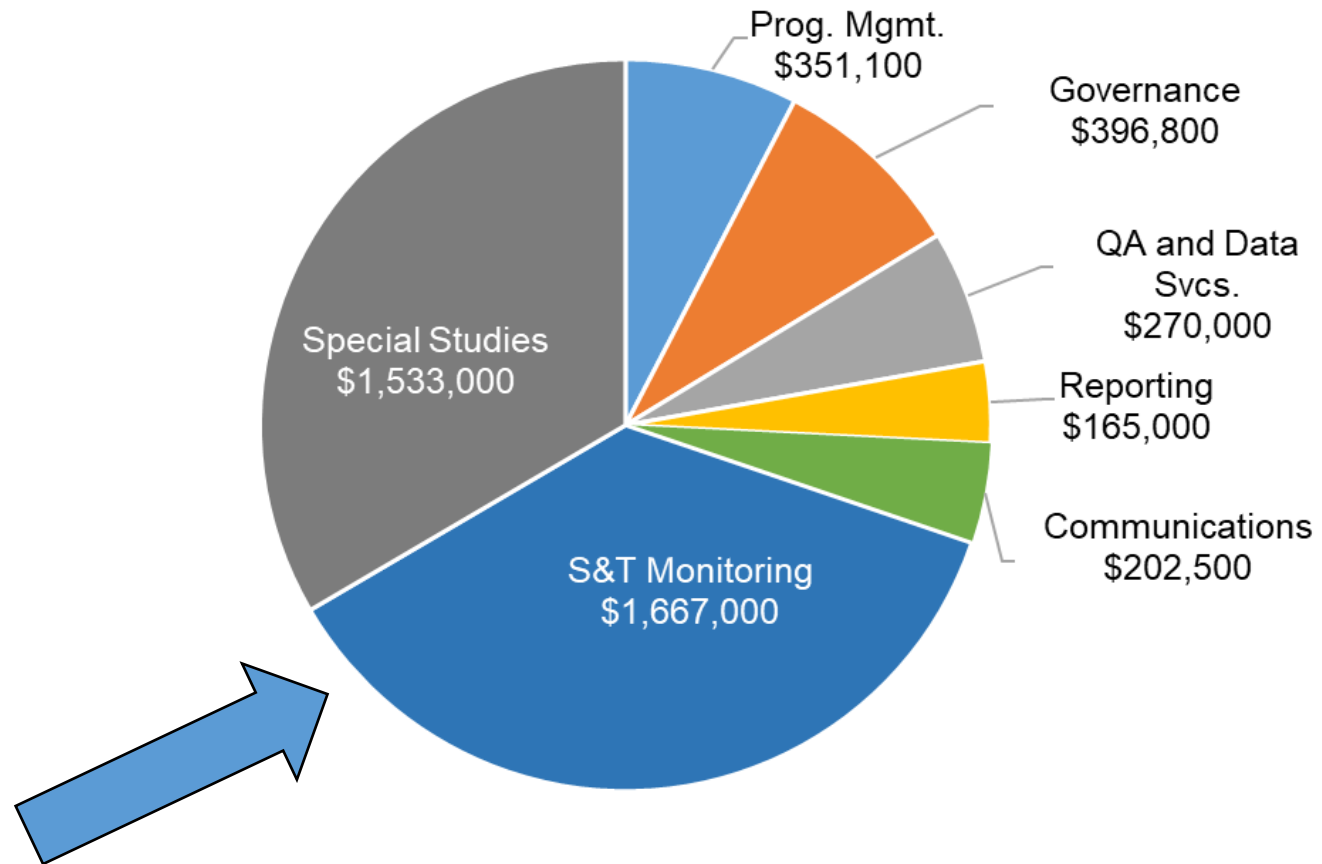


The screenshot displays the website for the Regional Monitoring Program for Water Quality in San Francisco Bay. The browser address bar shows the URL [sfei.org/programs/rmp](https://www.sfei.org/programs/rmp). The page features a navigation menu with links for About, Programs & Projects, Library, Data Center, and Support. The main banner image shows a scientist in a red life vest and hat operating equipment on a boat, with the San Francisco skyline and the Golden Gate Bridge in the background. Below the banner is a grid of navigation buttons: Bay RMP, Communications (The Pulse, Annual Meeting, & more), Workgroups, Data, and Governance. A second row of buttons includes About, The RMP Team, RMP History, Status & Trends, and Special Studies. The text below the buttons states: "Since its inception in 1993, the Regional Monitoring Program for Water Quality in San Francisco Bay (RMP) has provided the information that regulators and decision-makers need to manage Bay water quality effectively. The RMP is an innovative collaborative effort between SFEI, the [Regional Water Quality Control Board](#), and the regulated discharger community." A bullet point highlights "An innovative partnership" and explains that "The RMP combines shared financial support, direction, and participation by regulatory agencies and the regulated community in a model of collective".



Status & Trends 2023

RMP Budgeted Expenses: 2023



Status & Trends 2023

- **Selenium in Sturgeon muscle tissue (delayed from 2022)**
- USGS Moored Sensor Network for Suspended Sediment
- USGS Monthly Cruises for Nutrients and Phytoplankton
- Toxic Contaminants in Water – Wet Season Year 2 (Pilot)
- **Toxic Contaminants in Sediment – Sediment Cruise**
- Toxic Contaminants in Near-field Bay Sediment
- Toxic Contaminants in Bay Margins Sediment
- Toxic Contaminants in Prey Fish
- Toxic Contaminants in Harbor Seals
- **Toxic Contaminants in Water – Dry Season Water Cruise**



Sturgeon sampling

- Goal was to collect samples from 30 fish
- Able to collect 12 samples over 4 full days of fishing



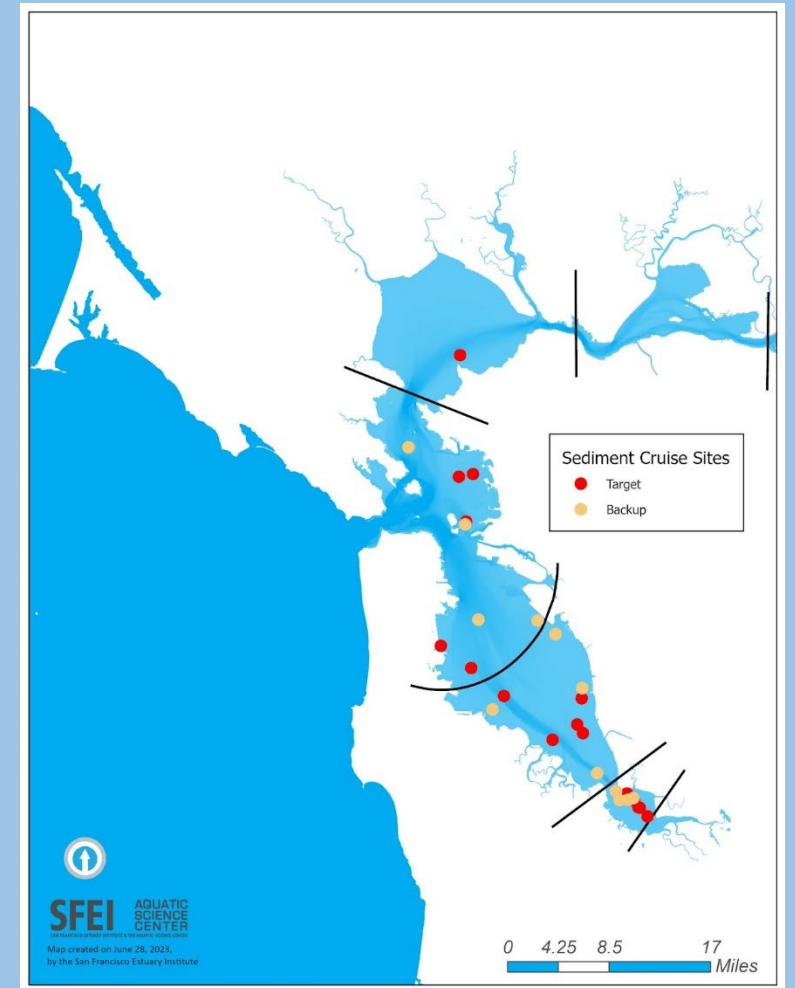


Sediment Cruise July 24-28, 2023

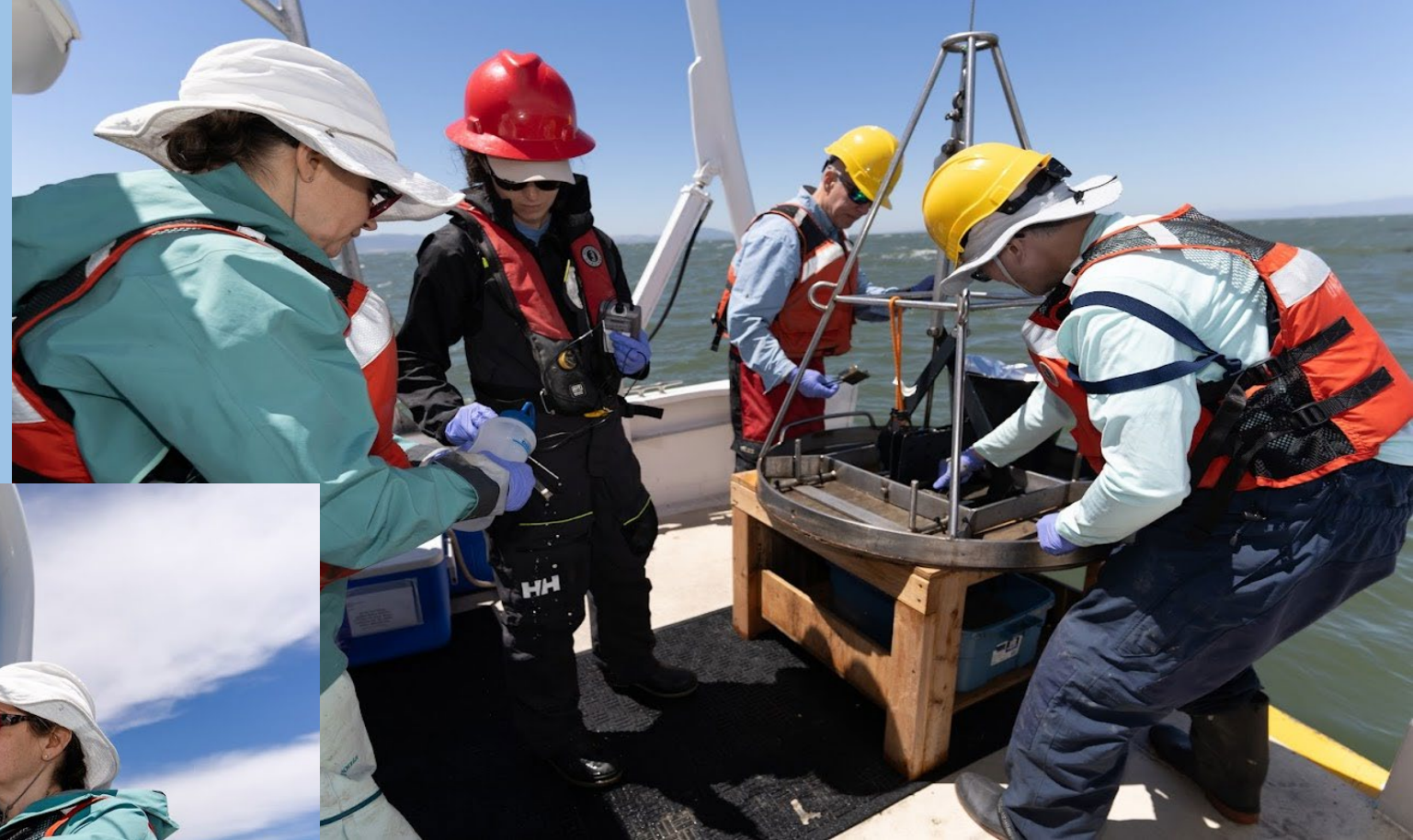


Deep Bay Sediment

- 16 stations, 4 targeted “historic” stations (1 each from CB/SB/LSB + 1 Pinole Point) and 12 random stations (4 CB, 4 SB, 4 LSB)
- PFAS, bisphenols, TOC, N % solids, grain size
- PBDEs (to be discontinued after this year)





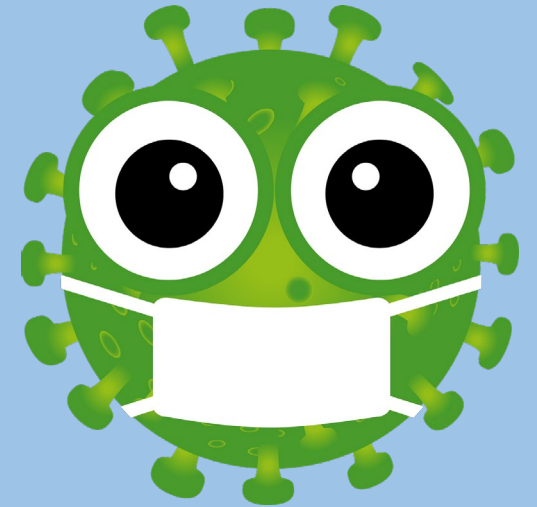




★ 229 containers of sediment collected over 4 days

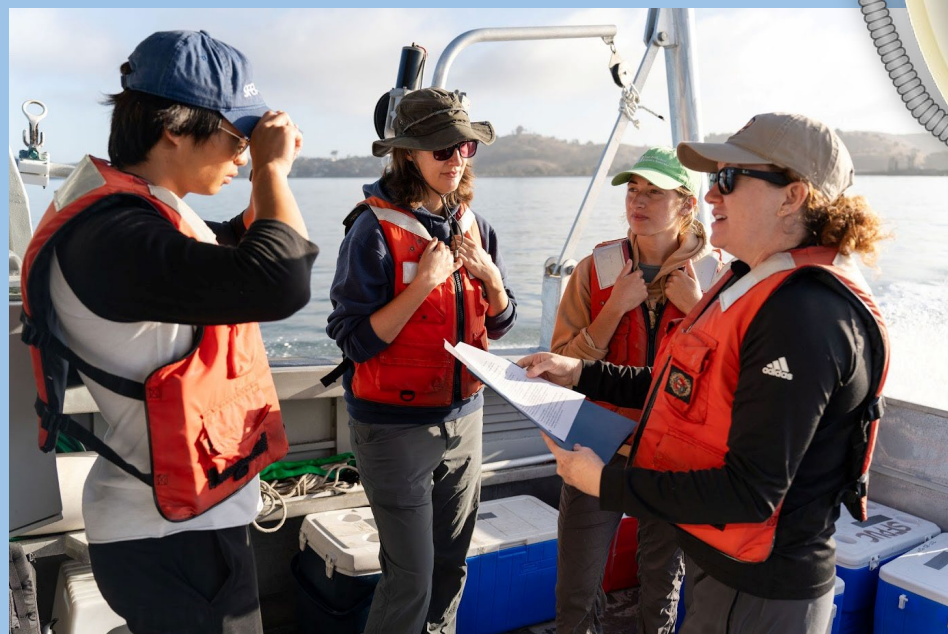


The 2023 Water Cruise “The Latest Cruise News.....”





RV Tomcat







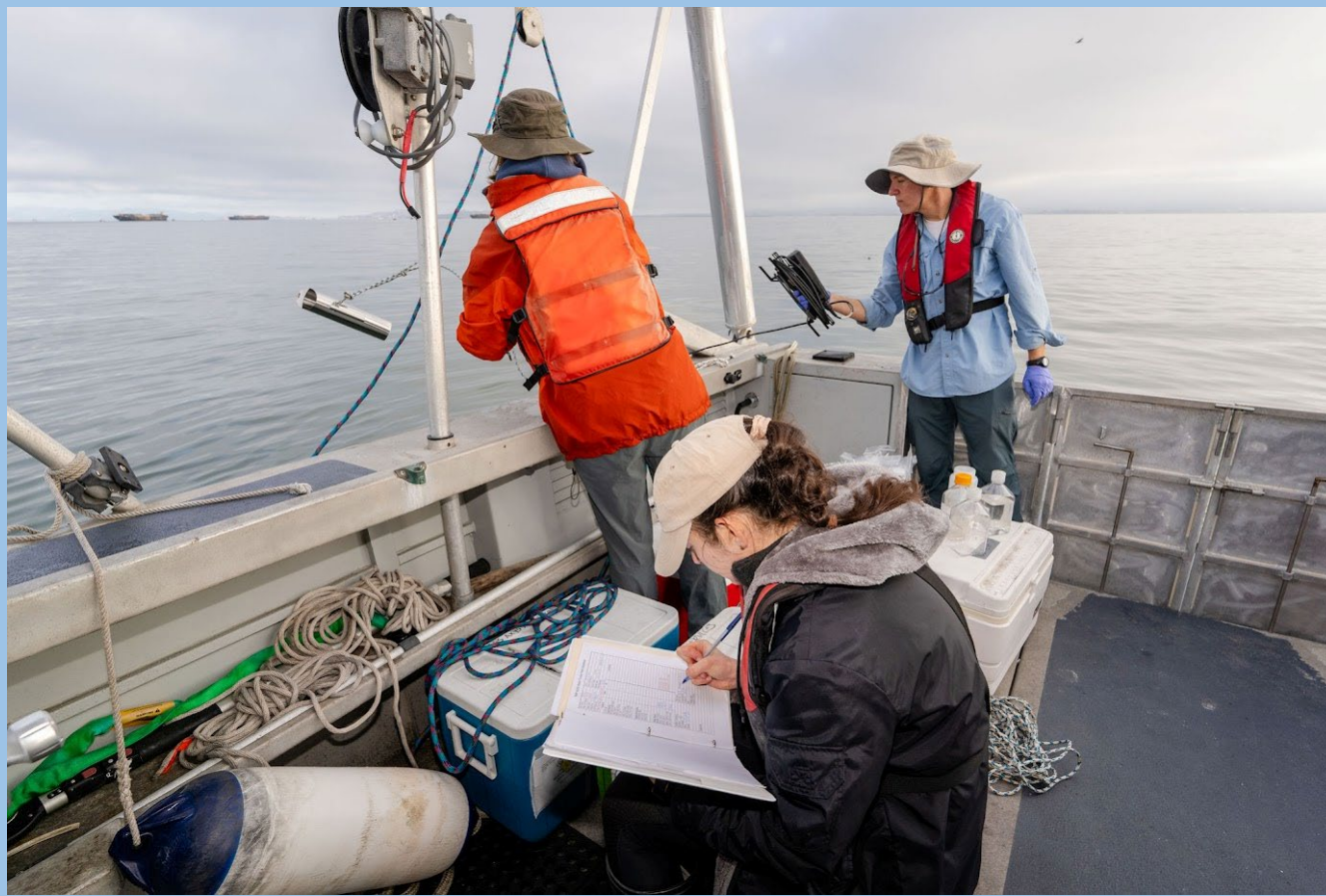
- PFAS, bisphenols, OPEs, Cu, CN, Ancillary, QACs, pharmaceuticals





- 22 stations distributed across the five Bay segments
 - 6 fixed: 1 in each of the 5 subembayments and an additional 1 in the LSB.
 - 16 random





★ More than 300 L of water was collected for 435 samples

RMP Partners for S&T 2023

- San Francisco Bay Regional Water Quality Control Board
- US Environmental Protection Agency
- Applied Marine Sciences
- SGS AXYS
- Brooks Analytical Labs
- Eurofins Scientific
- Caltest Analytical Laboratory
- San Francisco Public Utilities Commission Water Quality Division
- US Geological Survey
- Moss Landing Marine Laboratory
- Marine Pollution Studies Laboratory
- Gatecrasher Fishing Adventures
- Golden Bear Research Center, CSUM
- Marine Applied Research and Exploration
- Enthalpy Analytical
- The Marine Mammal Center
- Shira Bezalel Photography



Status & Trends 2024

- USGS Moored Sensor Network for Suspended Sediment
- USGS Monthly Cruises for Nutrients and Phytoplankton
- Toxic Contaminants in Water – Wet Season
- Selenium in Clams, Water, and Sturgeon
- Toxic Contaminants in Cormorant Egg Tissue
- Toxic Contaminants in Sport Fish
- Toxic Contaminants in Harbor Seals



Thank you!

**Photo credits:
Shira Bezalel
Zack Medinas
Martin Trinh
Amy Kleckner**



For more information:

amyk@sfei.org

<https://www.sfei.org/programs/rmp>

