

SF-Bay

Mesohaline and Tidal Fresh

Best Professional Judgment

Data Compilation

Aug, 2009 (SFEI)
Sarah Lowe

Subset ~~30~~ 20 stations

Use mERMq, Toxicity, Fines
and TOC

Spatial balance within
assemblage

Your Feedback Today

- Are we using the right measures to select BPJ stations?
- Are 20 samples enough (or too many)?
- Is the spatial balance OK?

0.5 mm sieve size data set

Dry season samples

NOAA00-01
WEMAP00
RMP
SQO/DWR
BPTCP
CISNet
BADA-LEMP

June 3rd 2009 cluster results

Mesohaline – Groups 6 & 7

Tidal Fresh – Groups 1 through 3

Mesohaline	N	Tidal Fresh	N
N samples	122	N samples	212*
Select for BPJ	20	Select for BPJ	20
Have chemistry	98	Have chemistry	73
FINES	114	FINES	116
TOC	114	TOC	112
SAL	89	SAL	0
<i>Ampelisca a.</i> SP%	75	<i>Chironomus t.</i> SP%	73
<i>Eohaustorius e.</i> SP%	50	<i>Hyalella a.</i> SP%	139
Bivalve Norm.Dev%	22		

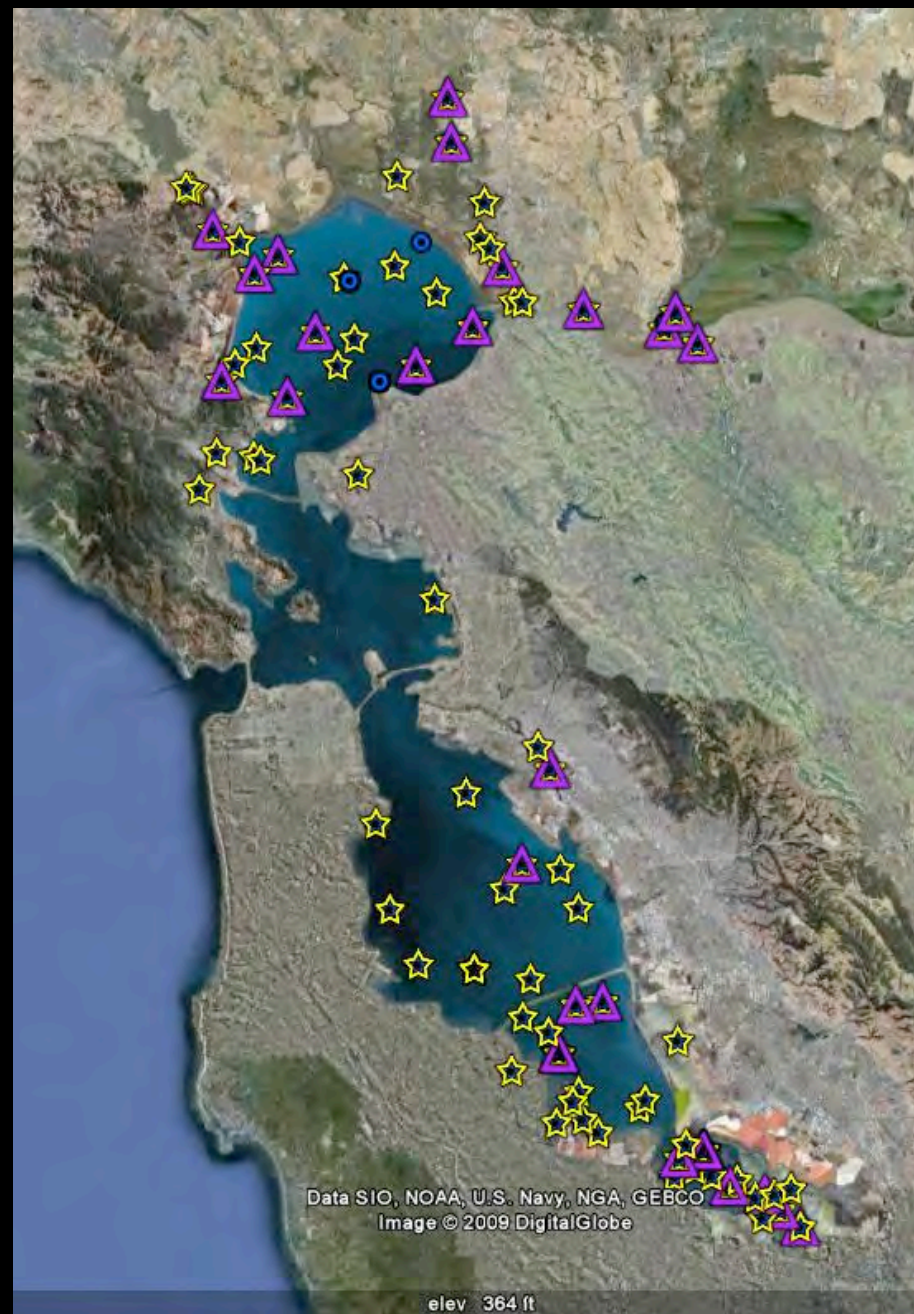
*155 identified in Jun-03 analysis
(added SQO 2008-05 stations)

**June 3rd 2009 cluster
results**

Mesohaline

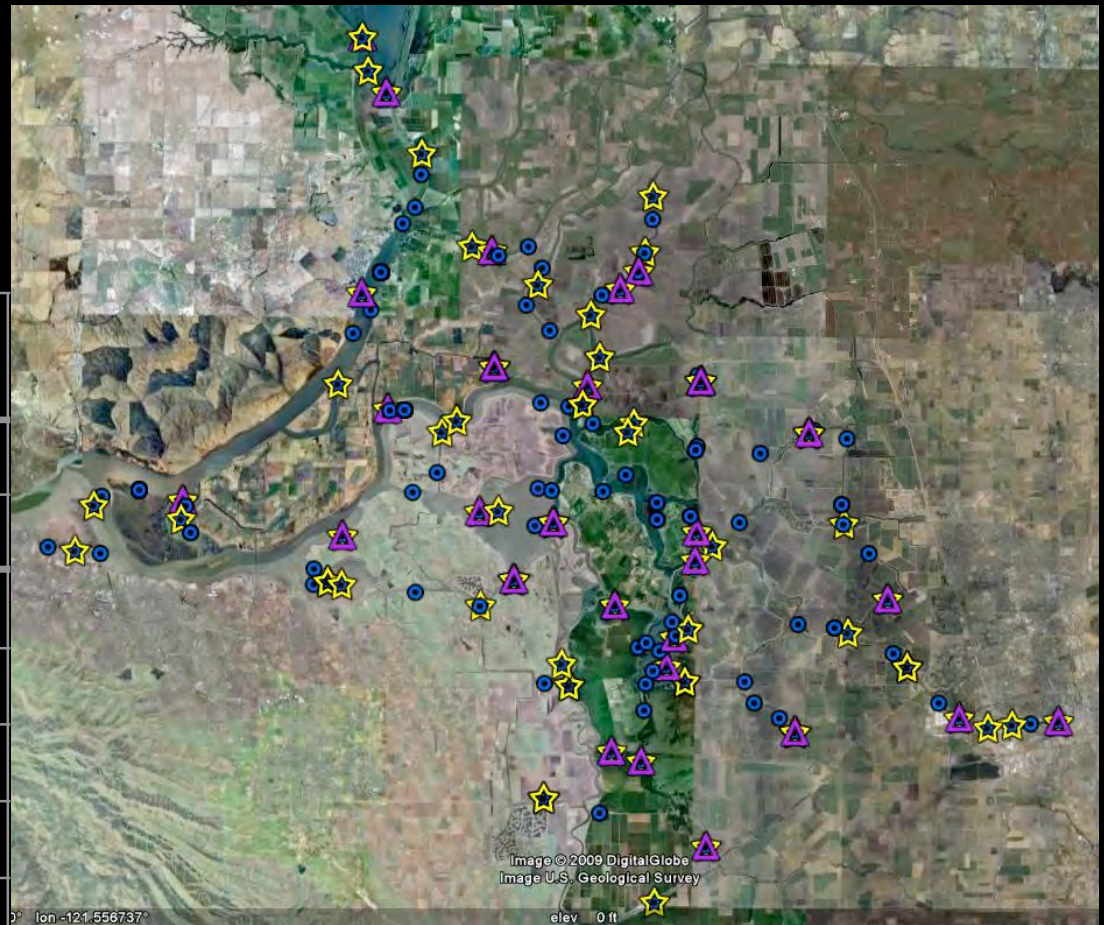
	Avg Of ERMq	FINES	TOC	SAL
BPJ Max	0.357	100	5.1	31
BPJ Min	0.032	20	0.5	8
Grp Max	0.439	100	5.9	38
90th%ile	0.146	99	3.4	31
75th%ile	0.118	97	1.6	28
25th %ile	0.087	71	1.3	22
10th %ile	0.069	46	1	17
Grp Min	0.032	16	0.2	8

June 3rd 2009 cluster results



Tidal Fresh

	Avg Of ERMq	FINES	TOC
BPJ Max	0.398	99	7.3
BPJ Min	0.005	2	0.1
Grp Max	0.398	100	13.1
90th%ile	0.106	95	5.5
75th%ile	0.083	78	3.7
25th %ile	0.053	41	1.1
10th %ile	0.024	22	0.6
Grp Min	0.005	1	0



June 3rd 2009 cluster results

Tidal Fresh

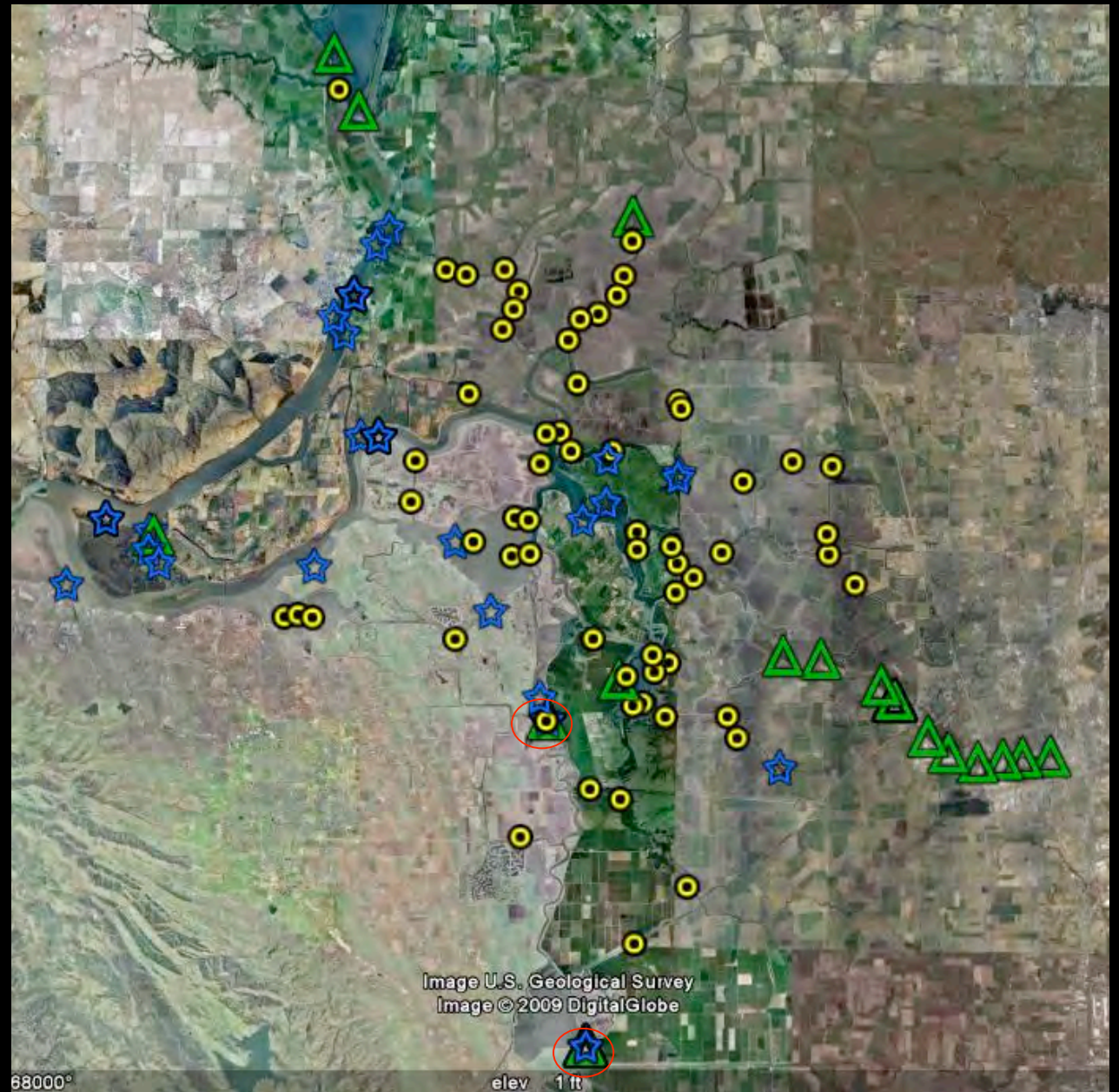
Group 1 yellow

Group 2 green

Group 3 blue

Red circle indicates
a station with
multiple samples
that classified into
more than one
Group

**June 3rd 2009 cluster
results**



Mesohaline

Group 6 yellow

Group 7 blue

Red circle indicates
a station with
multiple samples
that classified into
both Groups

June 3rd 2009 cluster
results

