



Watershed Information Center (WICC) & Conservancy Board *of Napa County*

*Napa County Conservation,
Development & Planning
Department*

*Watershed Information Center &
Conservancy (WICC)
of Napa County*

www.napawatersheds.org

History & Background

- ◆ Concept of WICC identified in 2000
 - Napa River Watershed Taskforce Report

Task Force: “Charged with examining a variety of short and long-term conservation strategies”

- ◆ WICC Board appointed in 2002
 - 17 member Board & Technical Advisory Committee
 - Diverse community representation



Directive

- Support resource protection & restoration
 - ◆ Napa River & countywide restoration projects
- Long-term resource management program
 - ◆ Public outreach & education, monitoring coordination, inventory and assessment, data management
- Monitor TMDL & State watershed policies
 - ◆ Sediment & Pathogen TMDLs
 - ◆ Stream & Wetland System Protection Policy (RWQCBs)
 - ◆ Instream Flow Policy (SWRCB/DWR)



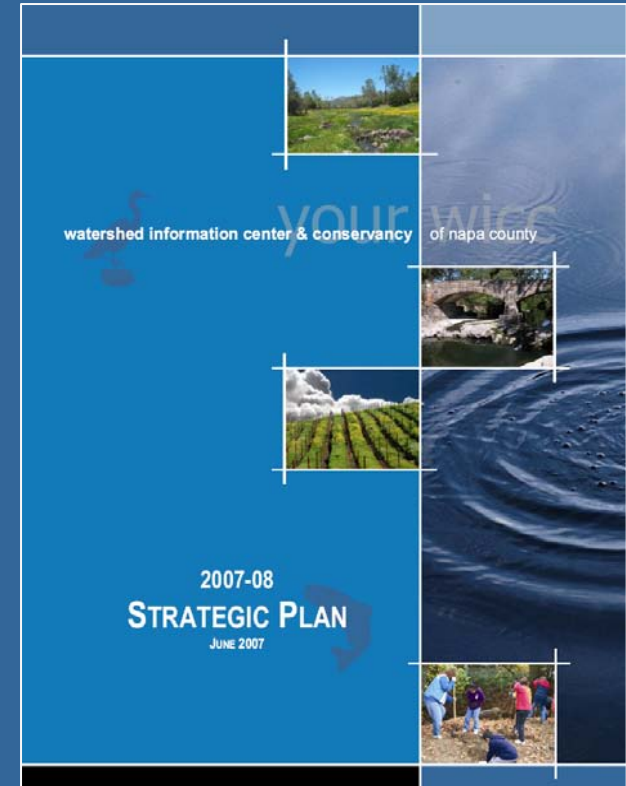
Strategic Planning

- ◆ Strategic plan developed 2003
- ◆ Plan reviewed/updated annually
- ◆ WICC Strategic Planning retreat in Spring 2007
- ◆ New 2007-08 Plan adopted June 28, 2007

Strategic Planning

07-08 Strategic Plan

- ◆ *Mission Statement*
- ◆ *Roles and Responsibility*
- ◆ *Vision 2025*
- ◆ *Guiding Principles*
- ◆ *Goals, Priorities and Actions*



Mission Statement

- ◆ 2007/08 Strategic Planning Session:

“To educate and support the community in its efforts to maintain and improve the health of Napa County’s watershed lands.”



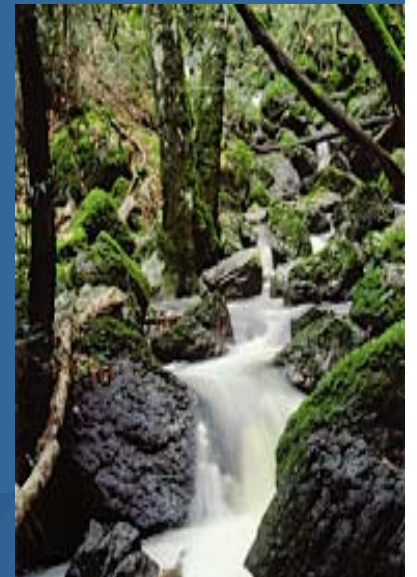


Vision 2025

- ◆ *"Napa County's watersheds will maintain a balance of natural processes to support healthy native fisheries, an abundance of native plants and wildlife, and water quality that meets state standards..."*
- ◆ *The Watershed Information Center & Conservancy of Napa County will be a guiding force in creating a shared, community-wide understanding of Napa County's watershed lands..."*
- ◆ *A network of active creek and land stewardship groups and organizations carry out monitoring, enhancement projects and management activities..."*
- ◆ *The WICC WebCenter is accessible, understandable and user friendly, containing current, valid and vivid information about Napa County's watersheds..."*

Strategic Plan

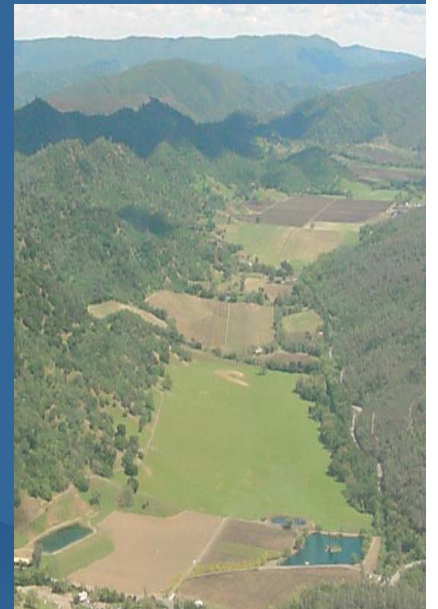
- ◆ *Guiding Principles Summary –
Build partnerships
& participation*
 - *Part of the solution*
 - *Politically neutral*
 - *Collect & disseminate the best information*
 - *Provide tools to discover & understand our watersheds*
 - *Collaborate with others*
 - *Support restoration activities*
 - *Promote voluntary participation*
 - *Seek funding from various sources*



Goals, Priorities and Actions

Five Plan Elements:

- 1. Watershed Conservation & Management*
- 2. WICC WebCenter/Website*
- 3. Communication, Coordination & Partnerships*
- 4. Education & Outreach*
- 5. Organizational Structure & Funding*



Strategic Plan Goals

Summary of Goals:

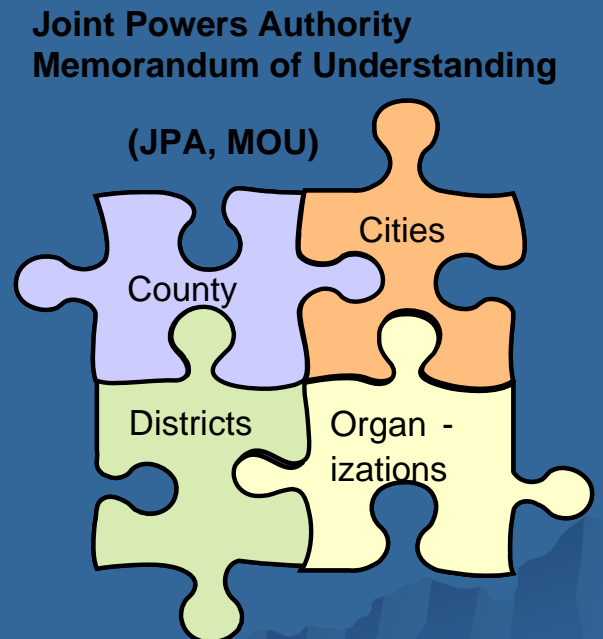
- Improve watershed health*
- Maintain informative website*
- Establish partnerships & coordination*
- Increase community understanding*
- Create organizational structure & obtain resources for long-term success*



Capacity Development

“It takes a village to ...”
implement a watershed monitoring program.

- ◆ Community Involvement & Participation
 - Staffing support
 - Local program benefits & support
 - Increased funding options
 - Buy-in of results/outcome
- ◆ A New WICC Organizational Structure



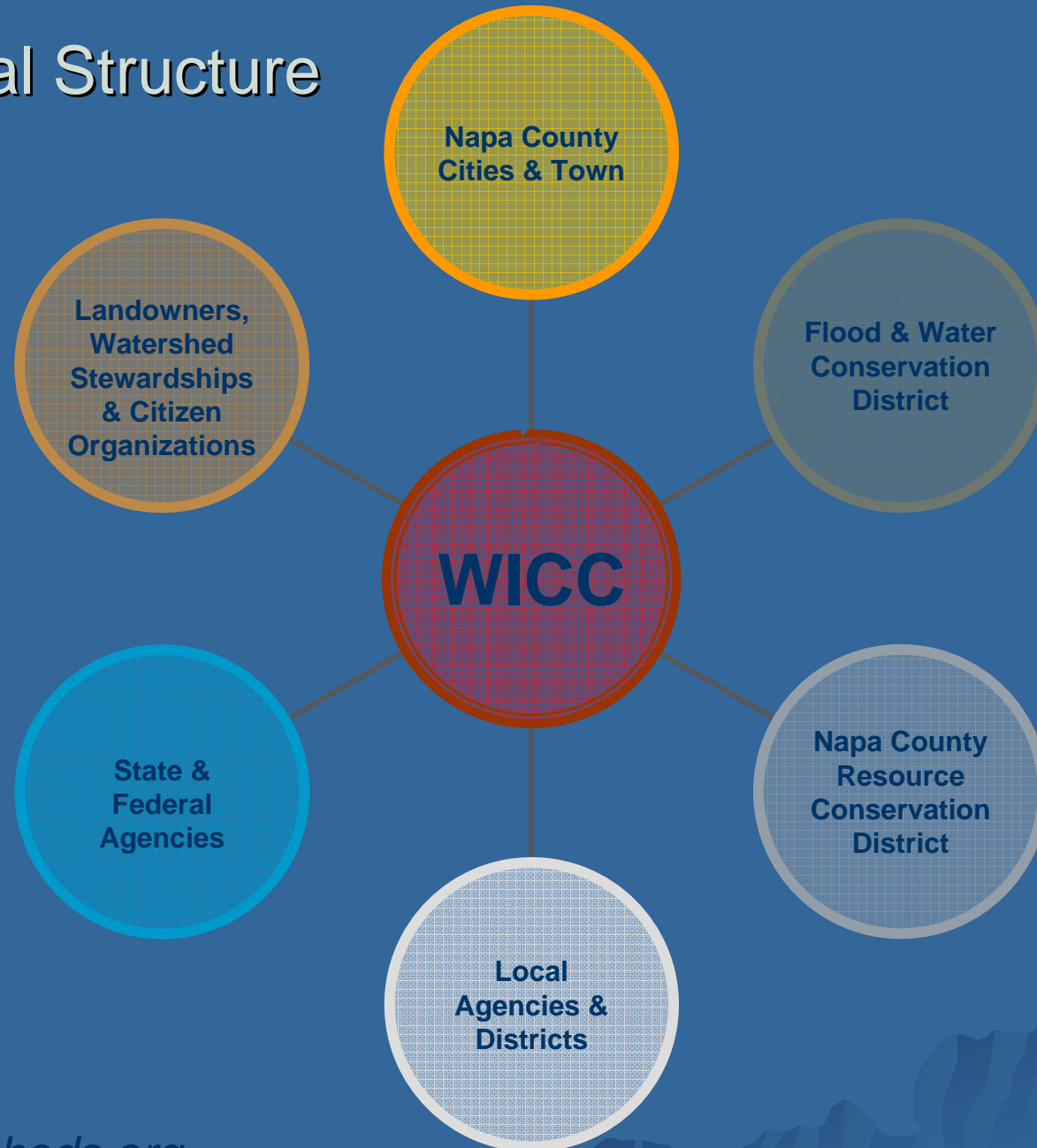
New Organizational Structure

Many Contribute to the Success

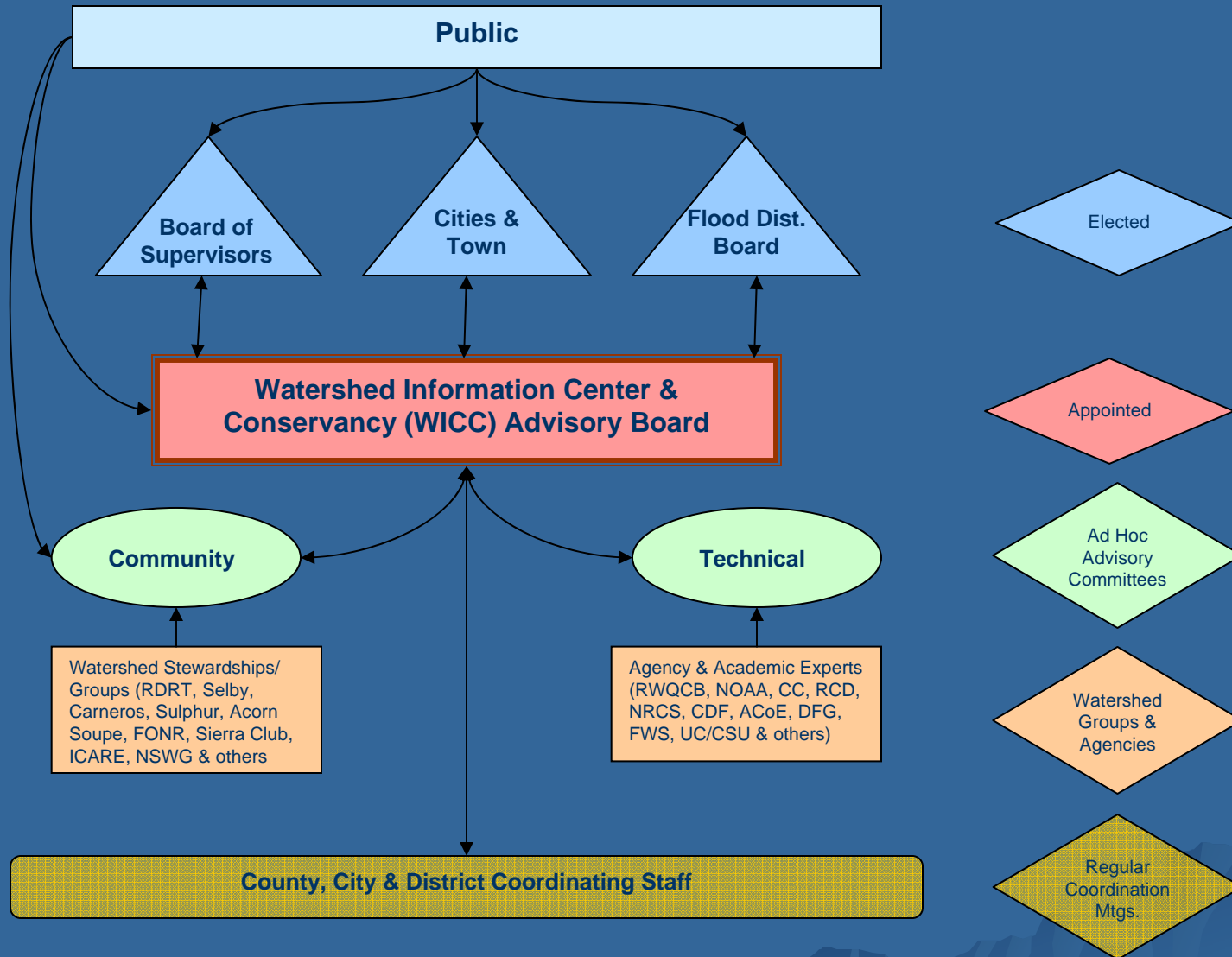


The dedication and involvement of many contributes directly to the merit and achievement of the WICC's mission and commitment to watershed monitoring

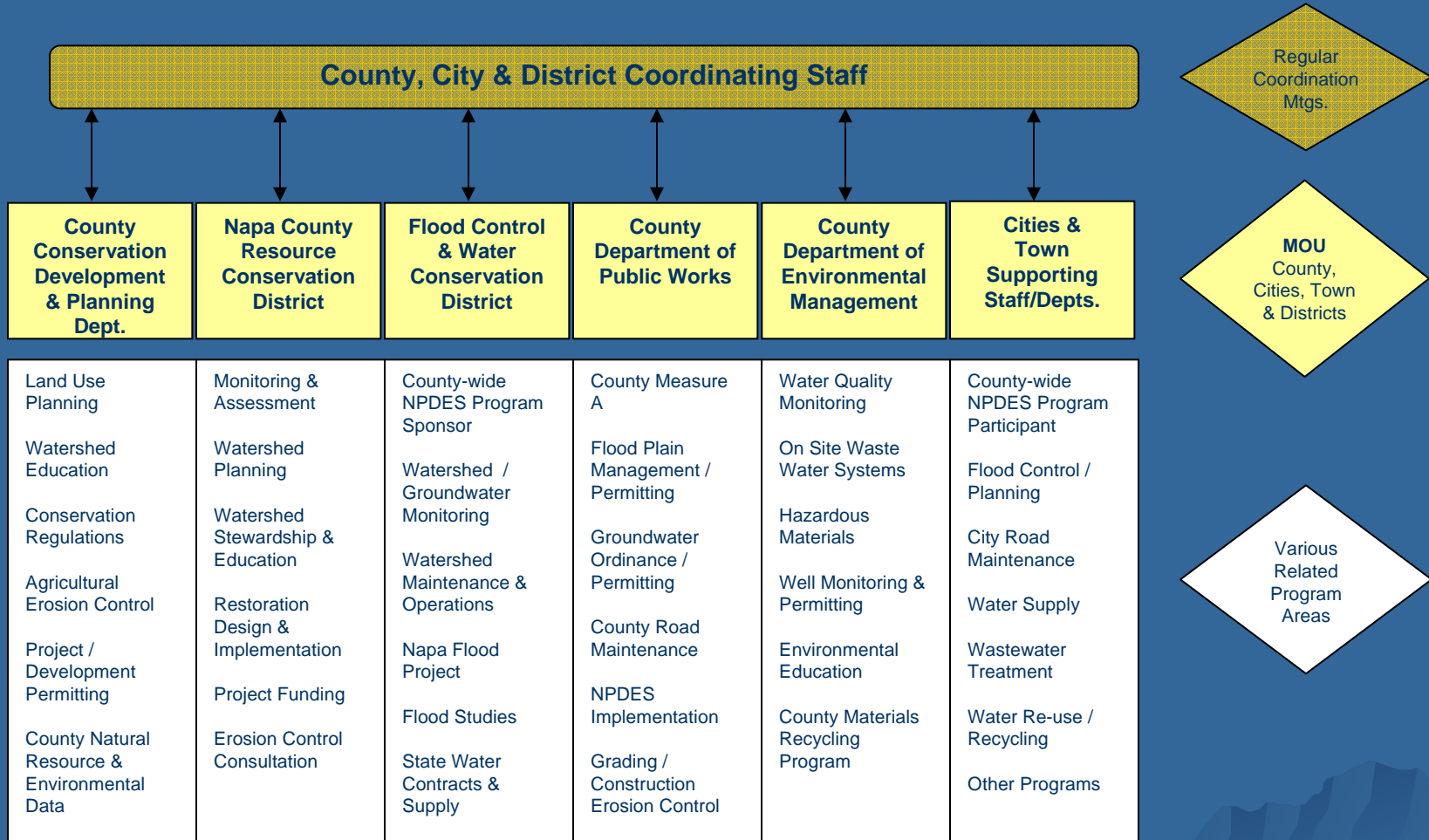
Organizational Structure



New Organizational Chart



Coordinating and Support Staff



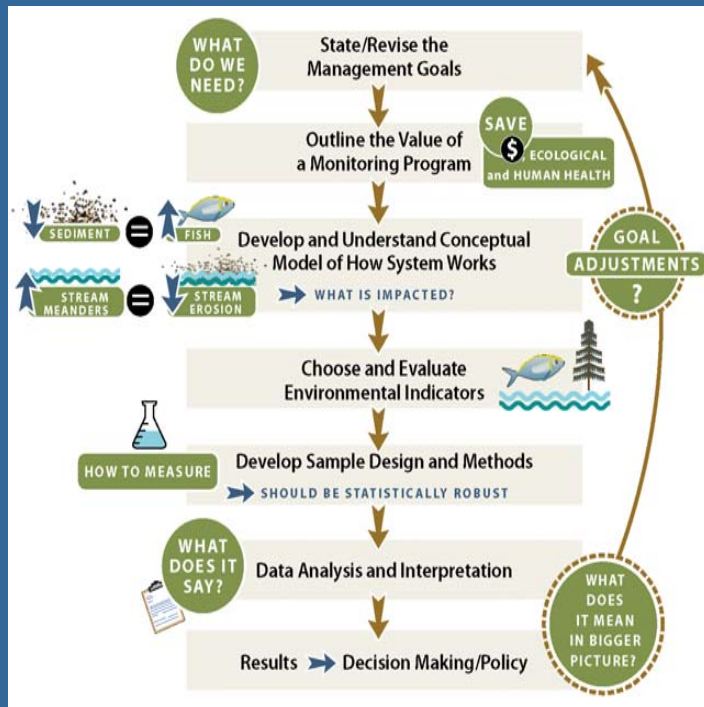
Key Component of Mission

Watershed Monitoring Program

- ◆ Gain knowledge & understanding
 - Watershed resources & functions
 - Systems & processes
 - Management options & affects



Monitoring Program Development



- ◆ Monitoring Strategy Adopted 2005
 - Consultant (SFEI)
 - WICC Technical Advisory Committee
 - WICC Board of Directors

Program Framework

Ten Principles of Program's Design

- ◆ Clear goals & objectives,
- ◆ Assessment questions formulated from the goals,
- ◆ Monitoring program design,
- ◆ Indicator selection,
- ◆ Quality assurance,
- ◆ Data management,
- ◆ Data analysis & assessment,
- ◆ Program reporting,
- ◆ Programmatic evaluation, &
- ◆ General support & infrastructure planning.



Program Challenge

Funding, Support & Coordination



- ◆ Capacity
 - Promotion & outreach
 - Implementation & training
 - Oversight & reporting
- ◆ Funding
 - Initial startup
 - Sustained long-term
 - ◆ Base program needs
 - Focused & project specific

Funding & Development

CalFed Watershed Program “WAF Valuation” Grant



- ◆ Award
 - \$395,000 awarded through June 2010
- ◆ Goal
 - Develop a process to apply and evaluate the State’s Watershed Assessment Framework (WAF) at a local and regional scale
- ◆ Scope
 - Napa River watershed for local pilot
 - North Bay & Delta for regional analysis

About the Project

“Watershed Assessment Framework North-Bay & Delta Scoping & Napa River Pilot Project”

- Application to DWR, March 2007
- Award Contracted, January 2008
- 5 Sub-contractors involved



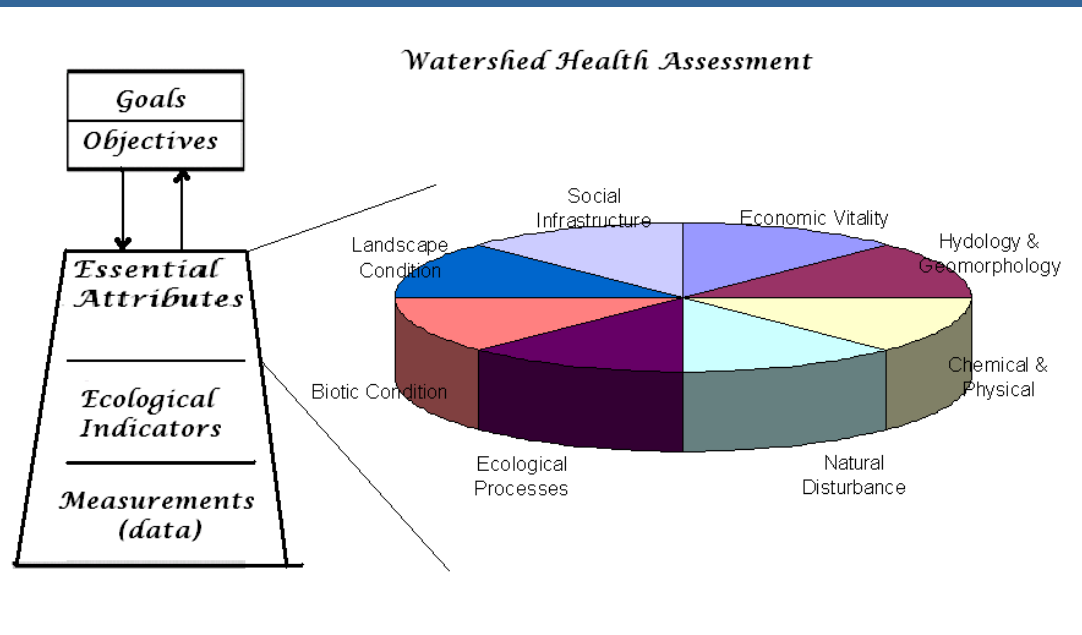
◆ The Watershed Assessment Framework

- US EPA Science Advisory Board (SAB)
- CA Watershed Mgmt. Strategic Plan
- Watershed Health/Condition



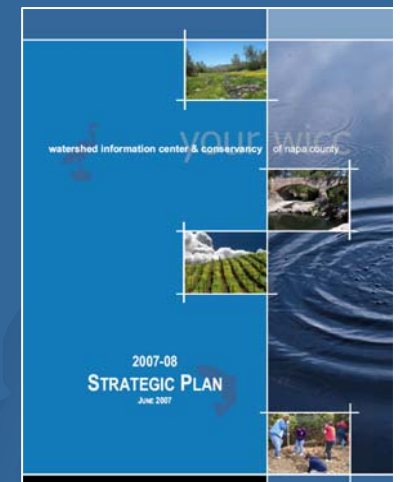
Project Tasks

- ◆ Involvement and Educate Stakeholders and TAC
- ◆ Link WS Goals to Potential Indicators
- ◆ Test Selected Indicators in Napa River
- ◆ Investigate “Scaling” of Indicators
- ◆ Develop Reporting Mechanism
- ◆ Report Local and Regional Findings
- ◆ Participate in Statewide Coordination



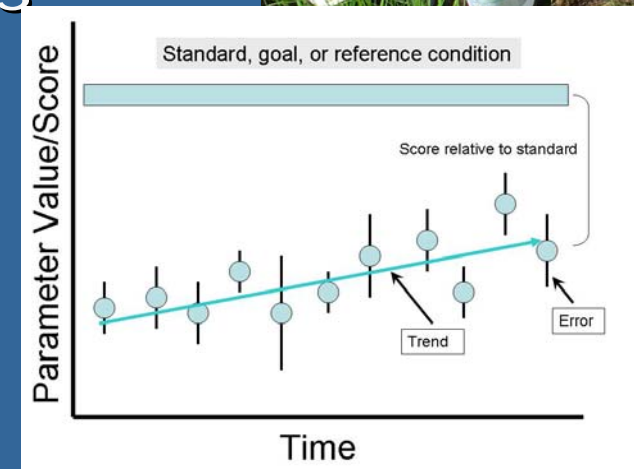
Why? At the local level...

- ◆ Key Land Use Issues
 - Flood control concerns
 - Sediment and pollutant concerns
 - Contentious land use planning history
- ◆ Napa County Baseline Data Report (2003-05)
 - Recommendations
- ◆ Napa Co. General Plan Update (June 2008)
 - Conservation action items
 - Water & watershed resource planning
- ◆ Watershed Information Center & Conservancy (WICC) Board Strategic Plan



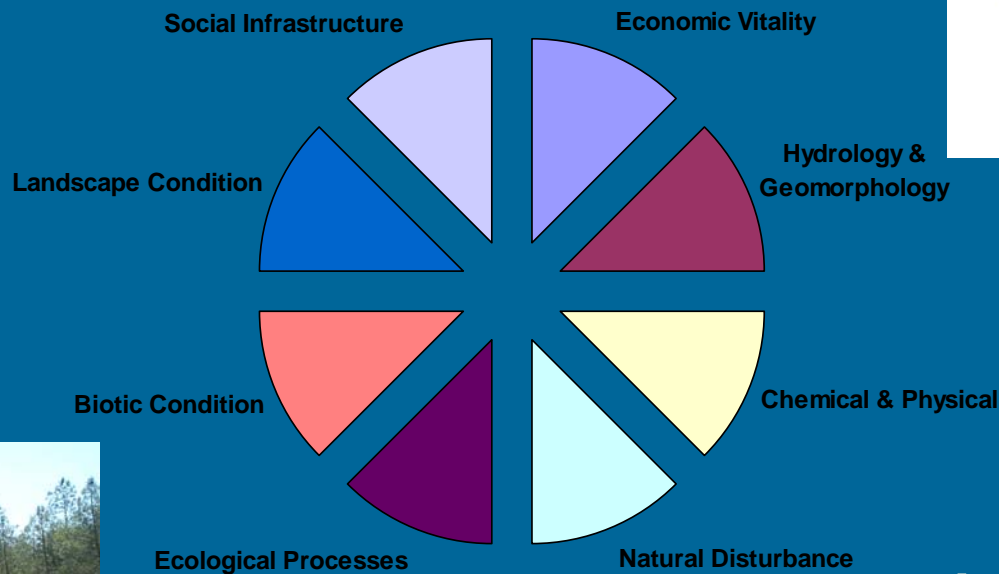
Need to Know

- ◆ Compliance
 - TMDLs, NPDES, Others
- ◆ Effectiveness
 - Local & Regional Programs
 - ◆ Water Quality
 - ◆ Water Supply
 - ◆ Flood Control
 - ◆ Watershed/Restoration
- ◆ Goal Attainment
 - Healthy Watershed System



Monitoring Program & WAF

◆ Utilizing Monitoring Strategy Developed



◆ Applying the WAF



The Team

- ◆ Local & Regional Experts
 - Scientist
 - Technical Advisors (TAC)
 - Policymakers

- ◆ Landowners & Stakeholders
 - Environmentalist
 - Land Owners/Managers
 - Interest Groups
 - Community at Large



Timeline

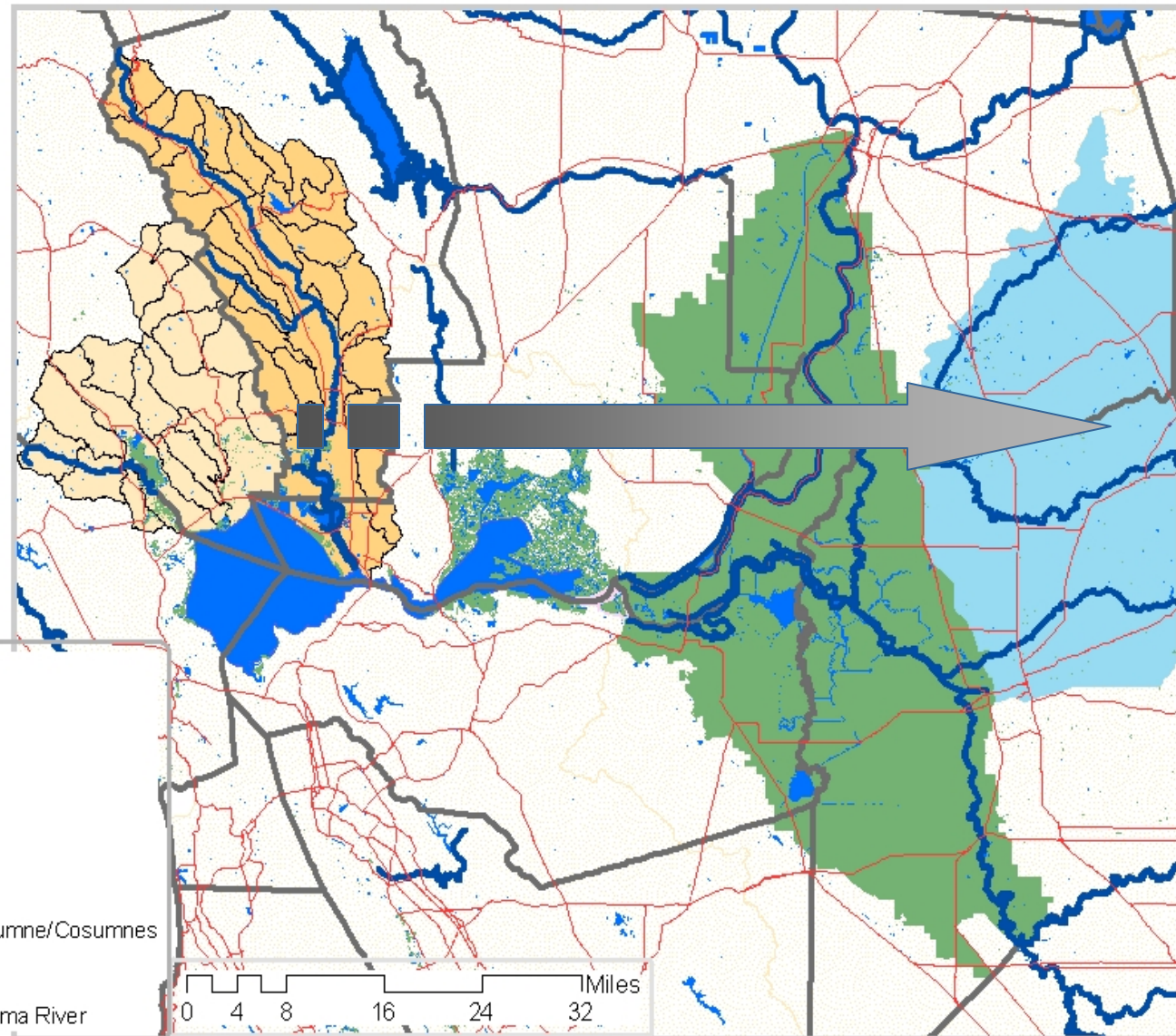
<u>Task</u>	<u>2008</u>	<u>2009</u>	<u>2010</u>
Basis of Assessment Approach	-----		
Local & Regional Coordination	-----	-----	-----
Develop Indicator Analysis & Reporting Plan	-----		
Indicator Analysis in Focus (Napa River) Watershed		-----	
Report Findings for Watershed & WAF Testing			-----

Watershed Assessment Framework: North-Bay & Delta Scoping and Napa River Pilot Project Study Area



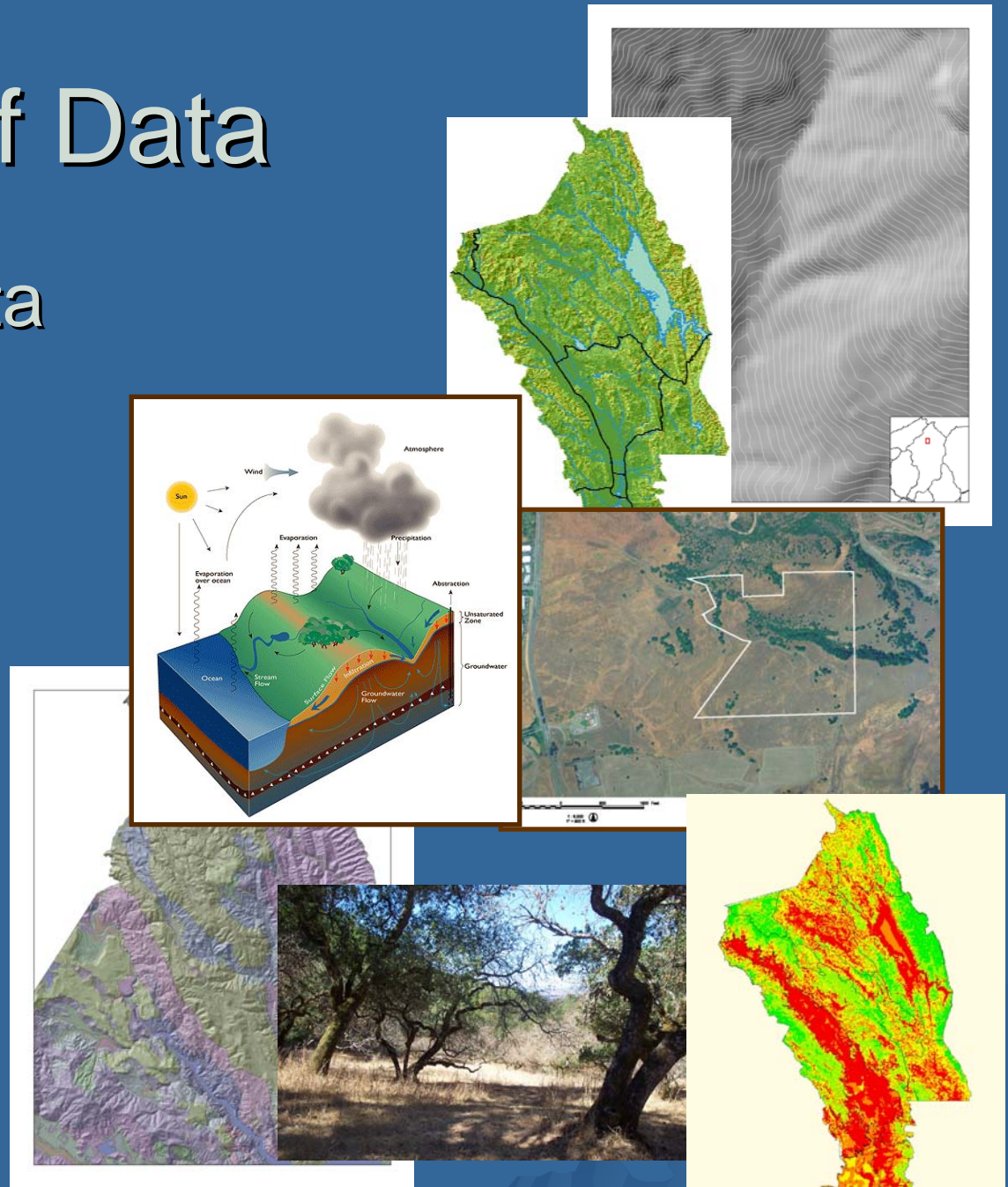
Legend

- Highways
- Major Waterways
- County
- Lakes and Open Water
- Delta and Wetlands
- Lower Calaveras/Mokelumne/Cosumnes
- Napa River
- Sonoma Creek & Petaluma River



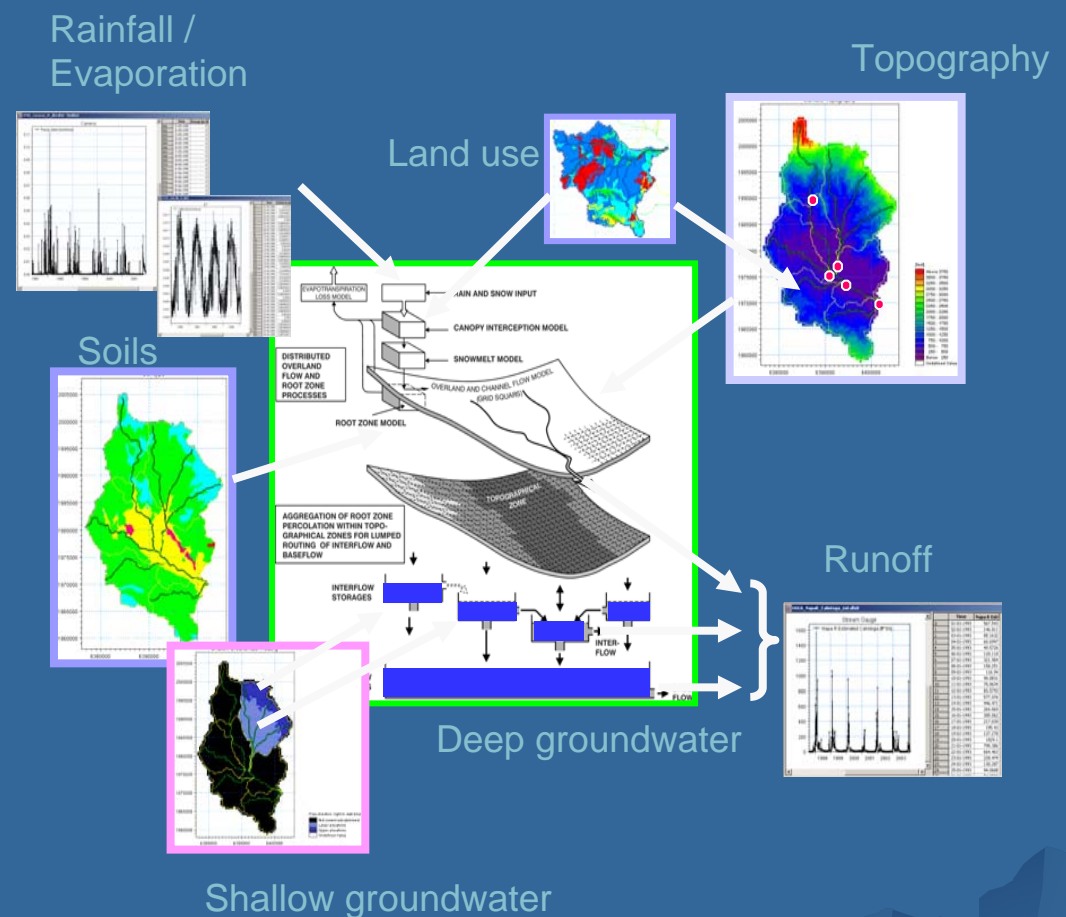
Examples of Data

- ◆ Geographic Data
 - Terrain
 - Channels
- ◆ Biology
 - Species
 - Diversity
- ◆ Soils/Geology
 - Erosion
 - Stability



Examples of Data

- ◆ Land Use
 - Agriculture
 - Development
- ◆ Hydrology
 - Flow
- ◆ Social & Economic
 - Income/Wealth
 - Health
 - Wellbeing



Next Steps



- ◆ Refine Watershed Goals
- ◆ Develop Knowledge Base
 - Compile Research & Summarize Analytical Approaches
- ◆ Develop Indicator Analysis Framework
 - Document Framework for analysis
 - Categorize available data
 - Report on Analytical Approach

Communicating WAF Results

- ◆ Illustration of progress

“How well are we doing?”

- Goals
- Objectives
- Science

- ◆ Multiple Levels

- Policy
- Management
- Action
- Feedback



Environmental Condition



Management Performance





Questions, Discussion & Involvement

Jeff Sharp

707-259-5936

jsharp@co.napa.ca.us

www.napawatersheds.org